

JONGERT®

de Groot

3900MY

designer: Guido de Groot

JONGERT®



3900MY

de Groot

designer: Guido de Groot

JONGERT®



3900MY

de Groot

designer: Guido de Groot

JONGERT®



de Groot

3900MY

designer: Guido de Groot

JONGERT®



de Groot

3900MY

designer: Guido de Groot

JONGERT®

styling impressions - styled by guido de groot



de Groot

3900MY

designer: Guido de Groot

JONGERT®

styling impressions - styled by guido de groot



de Groot

3900MY

designer: Guido de Groot

JONGERT®

bathroom styling impressions - styled by guido de groot

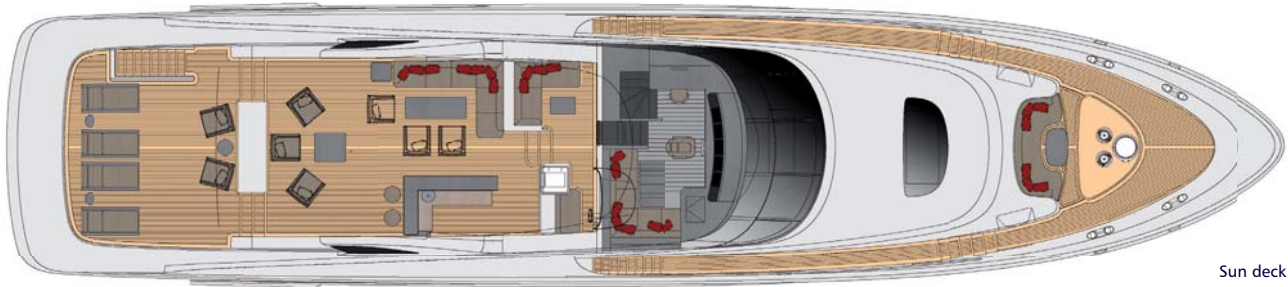


de Groot

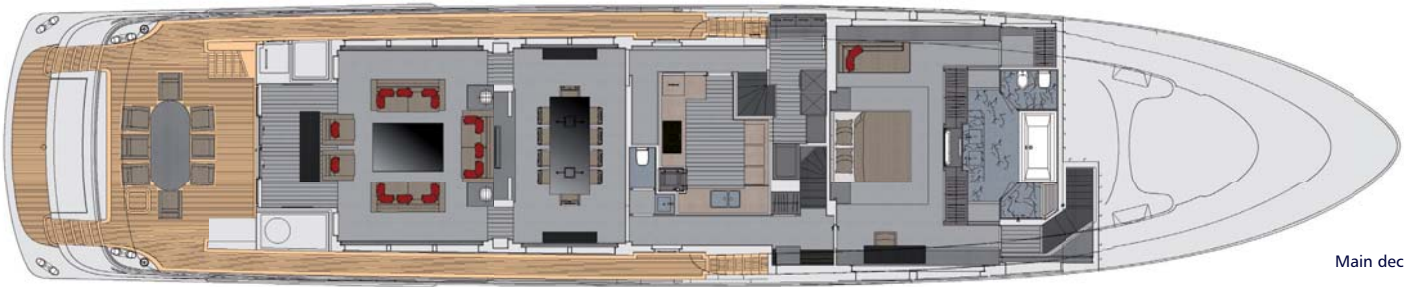
3900MY

designer: Guido de Groot

JONGERT®



Sun deck



Main deck



Cabin deck

de Groot

3900MY

Specifications

GENERAL

Three deck, twin engine semi-displacement motor yacht, designed for world wide service. The hull, superstructure, dodger and radar arch will be built in aluminium.

Naval Architecture:	Azure Naval Architects
Styling:	Guido de Groot Design
Interior design:	Guido de Groot Design
Classification:	Rina, C * HULL - *MACH - Ych (MCA) - AUT - UMS (Y) Short Range
Regulations:	MCA LY2 COLREG regulations 1972 edition and amendments, MARPOL regulations 73/78 as far as applicable

Flag:	Cayman Islands
Hull, superstructure & radar arch:	Aluminium

MAIN DIMENSIONS

Length over all:	39,00 m
Breadth:	7,80 m
Draught (half loaded):	2,04 m
Displacement half load:	app. 210 t
Gross tonnage:	app. 320
Tank capacity:	Fuel oil: app. 46.500 l. Lub. oil: app. 880 l. Dirty oil: app. 880 l. Fresh water: app. 7.400 l. Black/grey water: app. 2.600 l. Bilge water: app. 1.400 l.
Maximum speed:	app. 28,0 kn
Cruising speed:	app. 24,0 kn
Passage Speed:	app. 12,0 kn
Range:	app. 2.400 nm @ 12 kn, one generator running

PROPULSION

Main engines:	2x "MTU" 16V4000 M90, 2.720 kW / 3.650 bhp @ 2.100 rpm each with Trailing pumps and Trolling
Gear boxes:	2x ZF model BW 7550 P
Propellers/propeller shafts:	2x Water lubricated propeller shafts with fixed pitch 5 bladed propellers
Stabilizers:	VT Naiad or equal trim/stabilization system
Bowthruster:	Hydraulic app. 60 kW / 80 hp

SHIPS SYSTEMS

Bilge / Firefighting:	2x Electric bilge pumps 1x Emergency bilge pump (diesel driven) 1x Bilge water separator
Fuel:	1x Fuel Separator 1x Backup fuel pump / fuel trim pump 2x Double switchable Racor filters for main engines 2x Double switchable Racor filters for generators

Lub oil:	1x Lub oil filling station with pump, hose and pistol 1x Lub oil extraction pump with hose
Grey/Black water:	1x Hamann Mini L sewage treatment unit
Fresh water:	1x Hydrophore with pressure vessel 2x HEM water maker capacity 4500 l. per day 2x 7/13 kW heating elements for warm water 1x 200 l. boiler 2x circulation pumps
Central Hydraulic System:	2x pumps on PTO main engine 1x 7,5 kW Electric pump for auxiliary use Oil tank
Air:	1x Electric driven compressor 1x Kahlenberg T1 horn
Fire extinguishing:	Fire Pro" system for main engine room Sprinkler system for interior spaces

AC AND VENTILATION SYSTEM

Interior ventilation system:	Balanced mechanical ventilation system with fresh air supply at the Fan Coils and extraction in the shower cabins and day heads. In general fresh air supply amounts 25 m ³ per person per hour in cabins and 6 air changes per hour for other living spaces. Utility spaces will be ventilated by natural ventilation.
Engine room ventilation:	Mechanical ventilation system, laid out according DIN/ISO 8861
AC system:	CruiseAir or equal, based on Florida conditions. Chilled water system with chillers in the engine room and Fan Coils in each cabin and living space.

ELECTRICAL SYSTEM

The electrical system will be laid out as a 3 phase 230V/400V 50 Hz automatic paralel system with seamless switchover from shore to generator power. For emergency and navigation purposes a 24V DC system will be installed.

Generators:	2x Kohler 55EFOZD 55 kW / 68,8 kVA
Shore connection:	75 kVA
Alarm & Monitoring:	Jongert PLC based monitoring system with touch screen operation MTU Blue Vision monitoring for main engines and propulsion

NAVIGATION EQUIPMENT

Steering sys & Autopilot:	C. Plath
Radar:	Furuno
AIS:	Furuno
GPS:	Furuno
Speedlog:	Furuno
Depth Sounder:	Furuno
Wind Instruments:	Furuno
Plotter:	Transas

COMMUNICATION EQUIPMENT

VHF (2x):	Sailor
NAVTEX:	Furuno
Inmarsat C:	Sailor
Fleet 77:	Nera
PABX:	Panasonic
GSM:	SAGEM Dr. Neuhaus

ENTERTAINMENT EQUIPMENT

The guest and owners cabins, saloon and crew mess area will be provided with Bose audio equipment and Sharp Flat screen LCD screens. The Fly Bridge, Bridge deck and Main deck outside area's will be provided with Bose exterior speakers connected to the Saloon audio system. R&R antenna for terrestrial radio and TV reception. "KVH" Trackvision G6 satellite antenna with 24" dish and quad LNB for satellite reception.

PAINT SYSTEM

The outside of the hull will be grit blasted. A two component paint system will be applied, make "Alexseal", on the hull, superstructure and radar arch. A "Hascolux" paint/varnish system will be applied on the woodwork of the interior.

EXTERIOR

Deck equipment:	2x Muir electric anchor/mooring winches with chain, anchor and devils claw 2x Muir electric mooring capstans 1x Hydraulic gangway 1x Hydraulic tender crane
Teak:	The main deck will be covered with 15 mm teak The Fly Bridge and Sundeck will be covered with 10 mm teak

INTERIOR

Woodwork:	Owners choice in wood for luxury interior, HPL for crew area
Ceilings:	Upholstered in cabins and living spaces. Painted in bathrooms, shower cabins and galley.
Floors:	Carpet in cabins and living spaces. Marble or natural stone in bathrooms and shower cabins. Amtico in crew mess, crew galley, galley and wheelhouse
Wash basins and Tops:	Corian, Marble or natural stone
Galley:	Modular furniture (Bulthaup / Poggenpohl) with stainless steel worktop
Galley equipment:	Miele or equal
Cooling/freezing equipment:	Liebherr or equal

All specifications and general arrangements as provided in this document are provisional. Jongert can only be held liable for details as specified in the building contract.

de Groot